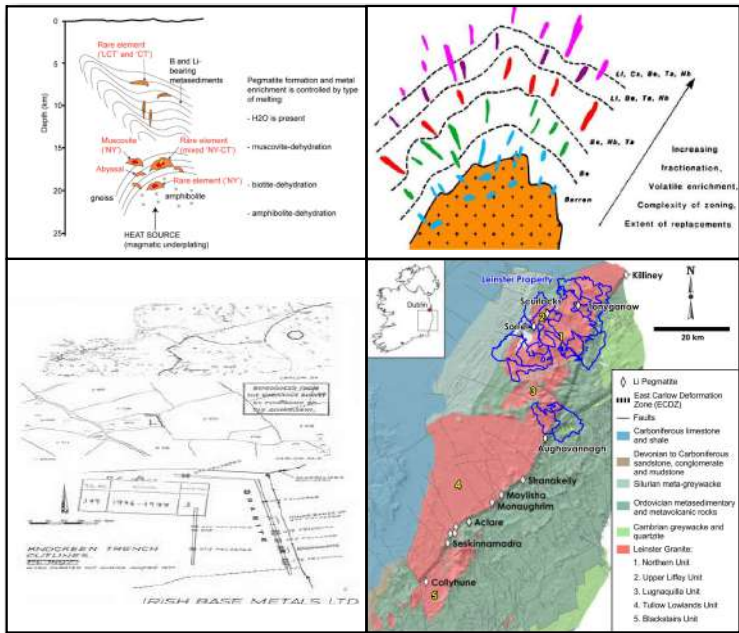


# Leinster Lithium Project, Ireland

## Lithium pegmatite mineralization in margins of the Leinster massif

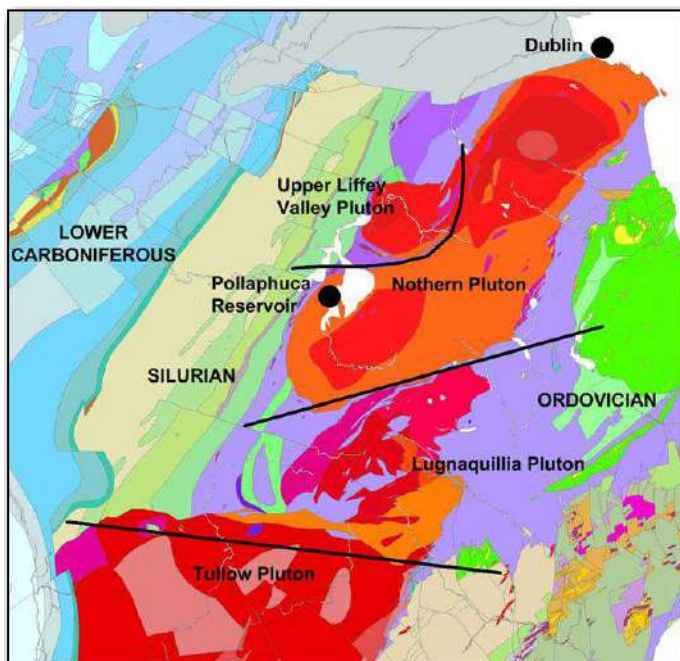
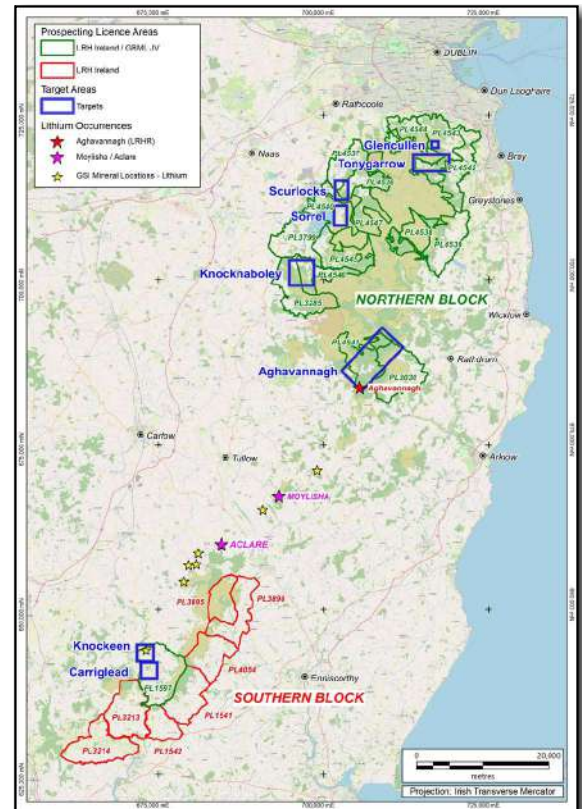


### From Concept

- Identification of prospective EV strategic exploration ground in Europe
- European source of lithium
- Historical spodumene pegmatite occurrences
- Regional stream sediment geochemical anomalism
- Regional shear zone in margin of the granite massif
- Safe jurisdiction

### Licence Applications

- Twenty-three applications
- Total area 760 km<sup>2</sup>
- All licences issued
- Supportive Mining Administration
- Transparent application process
- Well structured system security of tenure
- Bi-annual exploration expenditure commitments



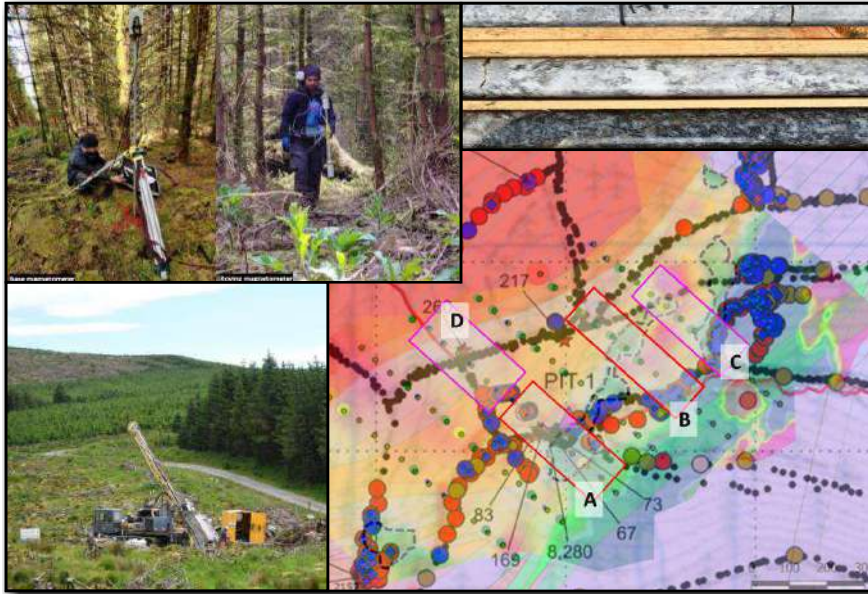
### Regional Geology

- Located at the NW and SE margins of the East Carlow Deformation Zone (ECDZ)
- Mid-Ordovician metasediments host
- Intruded by Caledonian aged S-Type granites (400 Ma)
- Li-Cs-Ta (LCT pegmatites)
- Spodumene-Albite-Musc-Qtz





# Lithium pegmatite mineralization in margins of the Leinster massif

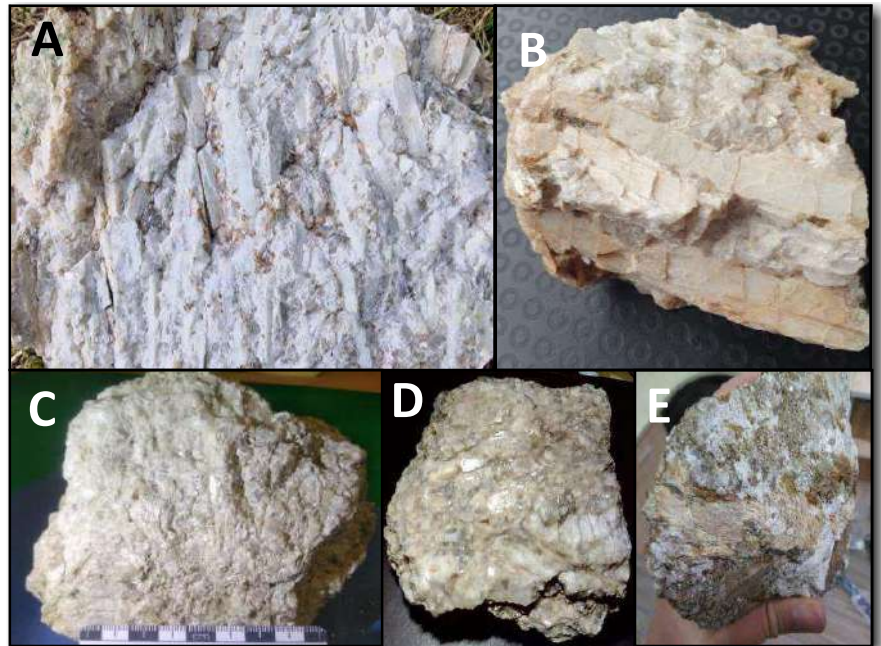


## Stage 1 Work

- Geological mapping & prospecting
- Ground magnetics
- Stream sediment geochemistry
- Shallow & deep overburden geochemistry
- Geological control drilling on one target

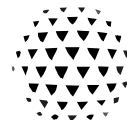
## Prospecting Results

- A Knockeen - 3.75%  $\text{Li}_2\text{O}$
- B Carriglead - 2.95%  $\text{Li}_2\text{O}$
- C Aghavannagh - 1.78%  $\text{Li}_2\text{O}$
- D Sorrel - Li 1.65%  $\text{Li}_2\text{O}$
- E Tonygarrow - 1.00%  $\text{Li}_2\text{O}$



TECHNOLOGY MINERALS  
PLC

-JV-



GLOBAL BATTERY METALS

Further Information: [projects@aurumdiscovery.com](mailto:projects@aurumdiscovery.com)

